

# Region 3 Section Support Committee Forum: Senior Member Elevations

*August 17, 2018, 8:00 PM | August 18, 2018, 10:00 AM*

*via WebEx*



# Agenda

## *Region 3 Section Support Committee Forum for August 2018*

- ▶ Membership Cycle Calendar Review and Discussion
- ▶ Senior Member Elevations: Volunteer Training for Sections, Societies, and Members
  - Additional Information for Senior Member Elevations
  - Senior Member 2020: Outward and Forward to Year 2020
- ▶ Open Discussion
- ▶ Appendix

(Duration: Approx. 1 hour)





# Membership Cycle Calendar

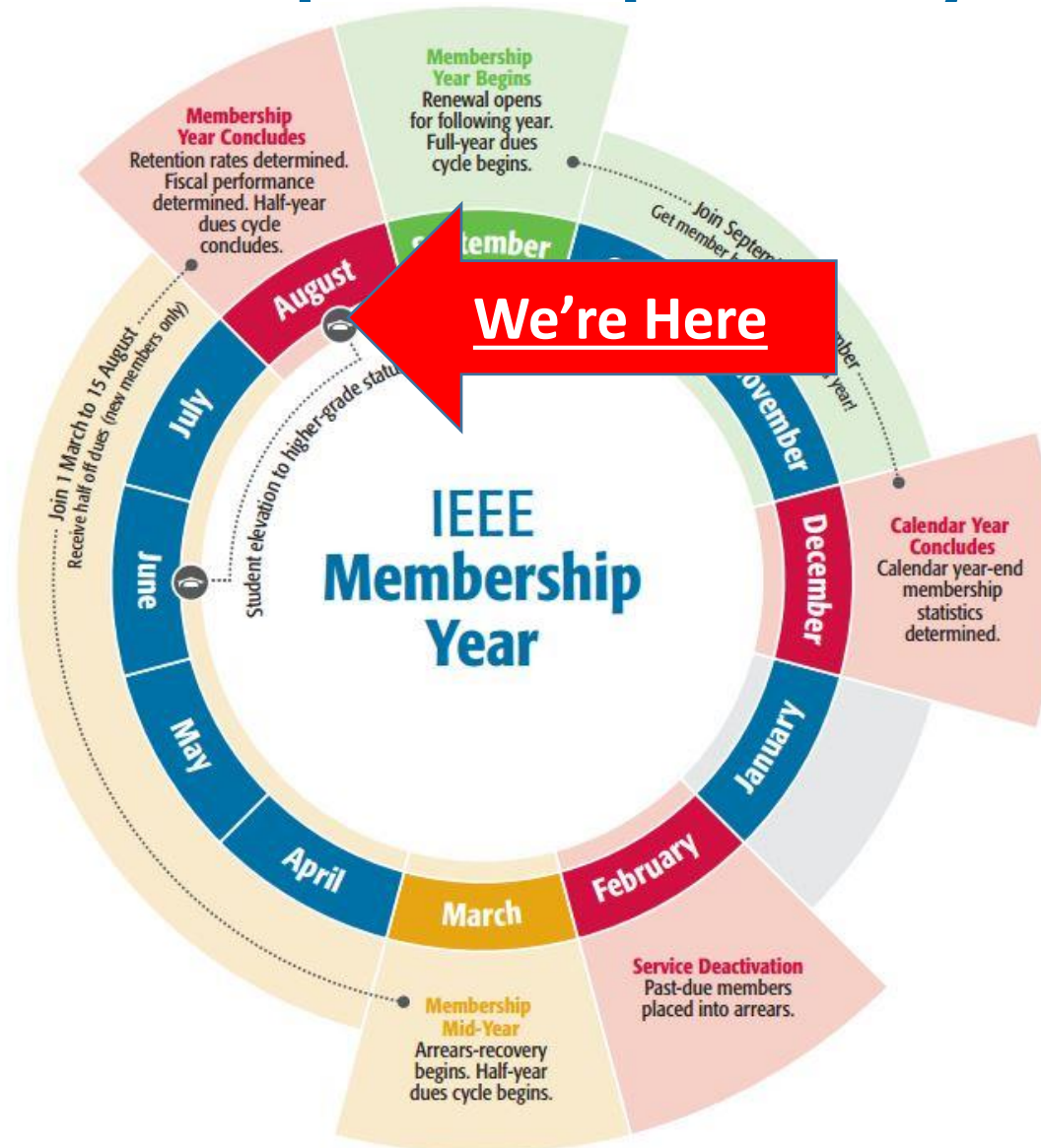
*Mark Torres, Chair, Region 3 Section Support Committee*

*Chris Wright, IEEE Region 3 Staff Support*





# IEEE Membership Development Cycle



Mark Torres  
Committee Chair



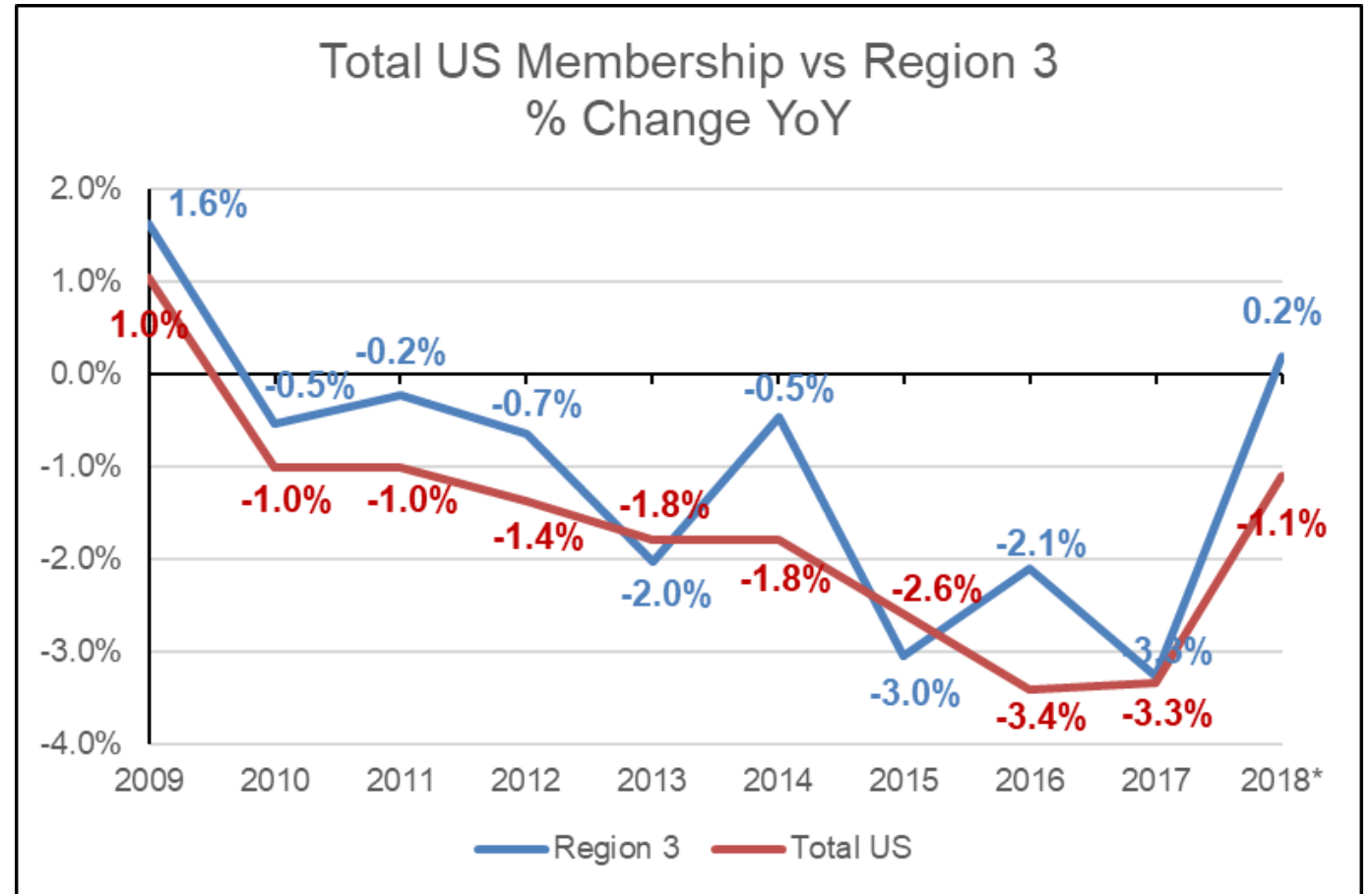
Chris Wright  
IEEE Staff Support



# How are we doing?

## Health Check for Region

REGION	TOTAL MEMBERS			
	2018	2017	Change	
			#	%
1	27,831	28,398	(567)	-2.0%
2	23,830	24,503	(673)	-2.7%
3	25,530	25,488	42	0.2%
4	18,555	18,601	(46)	-0.2%
5	23,578	23,826	(248)	-1.0%
6	47,483	47,887	(404)	-0.8%
<b>R 1-6</b>	<b>166,807</b>	<b>168,703</b>	<b>(1,896)</b>	<b>-1.1%</b>



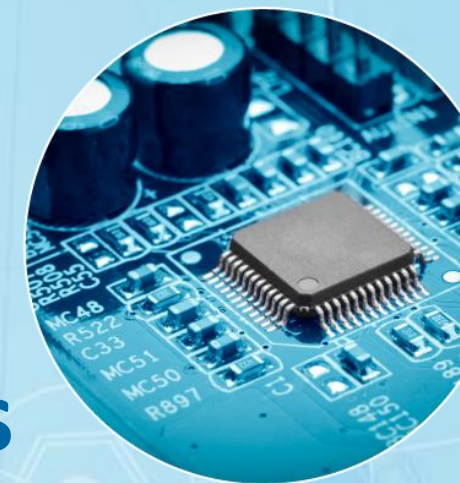
# Open Discussion

## Membership Development Q&A

- ▶ Email specific Region 3 Membership Development questions to the Section Support Committee Chair:
  - Mark Torres, [mgtorres@ieee.org](mailto:mgtorres@ieee.org)
- ▶ Popular questions regarding IEEE Membership can be found on the **IEEE Support Center** portal.
  - Go to <https://supportcenter.ieee.org/>.
  - Under **Featured Support Topics**, click **Membership**
  - Related topics can also be found on the site.
  - Support Center professionals are available 24 hours, 5 days per week: Sunday 4:30pm through Friday 4:30pm Eastern Time.



*TIP: Find the Region 3 and IEEE HQ Support Directory in the Appendix.*



# Senior Member Elevations: Volunteer Training for Sections, Societies, and Members

*Presenter: Jacquelyn D. N. Cunningham, Coordinator, Region 3 Senior Member Elevations*





# IEEE Senior Members

*Who/What is the IEEE Senior Member?*

- ▶ Senior Member is both an IEEE membership grade and an IEEE professional honor.
  - **As a membership grade**, Senior Member is the highest level to which an IEEE member can apply; and, while there is no additional application fee for moving from one membership grade to another, there is a specific process. This movement is called “**membership elevation**.” Elevation is the focus of this training.
  - **As a professional honor**, Senior Member is an important peer acknowledgement of the professional development and maturity of an IEEE member. Because this recognition comes after 10 years of significant contributions to one's profession, it is often perceived as an indicator of personal maturity as well as professional maturity. However, an IEEE Young Professional can be elevated to Senior Member, and an individual may join IEEE then immediately apply for Senior Member status.



Jacquelyn Cunningham  
Senior Member  
Elevations

Jacquelyn D. N. Cunningham  
MTM, SMIEEE | [jdnc@ieee.org](mailto:jdnc@ieee.org)



*TIP: Senior Member is a designation recognized by industries, organizations and professions but it is not a certification or licensure. The letters “SMIEEE” is used by Senior Members to indicate this grade and honor.*



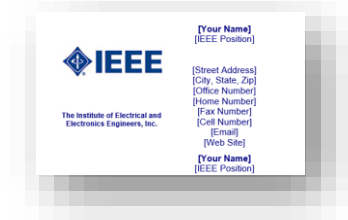


# Senior Member Status

*Why is Senior Member Status Important?*

## Primary Reasons:

- ▶ “The percentage and number of IEEE Senior members reflect the competence and prestige of IEEE and its products and services.”
- ▶ “Senior Members volunteer at a higher percentage rate than do other grades of IEEE members.”



*Senior Member Lapel Pin*



*TIP: Senior Members may add “SMIEEE” to business cards, per guidelines, and order the lapel pin.*



# Regional Numbers, Percentages of Senior Members

Region 1 through Region 10



Region	All Member Levels	All Life Senior & Senior Members	% LSM-SM
R1 -Northeastern USA	12729	1783	14%
R2 -Eastern USA	11015	1619	15%
R3 -Southeastern USA	12757	1978	16%
R4 -Central USA	9317	1171	13%
R5 -Southwestern USA	11746	1653	14%
R6 -Western USA	21961	3008	14%
R7 -Canada	8920	1155	13%
R8 -Europe, MEast, Africa	45219	5557	12%
R9 -Latin America	12438	945	8%
R10 -Asia and Pacific	73901	5670	8%
Total IEEE	220003	24539	11%

(Source: Collabratec, 8 Aug-18)



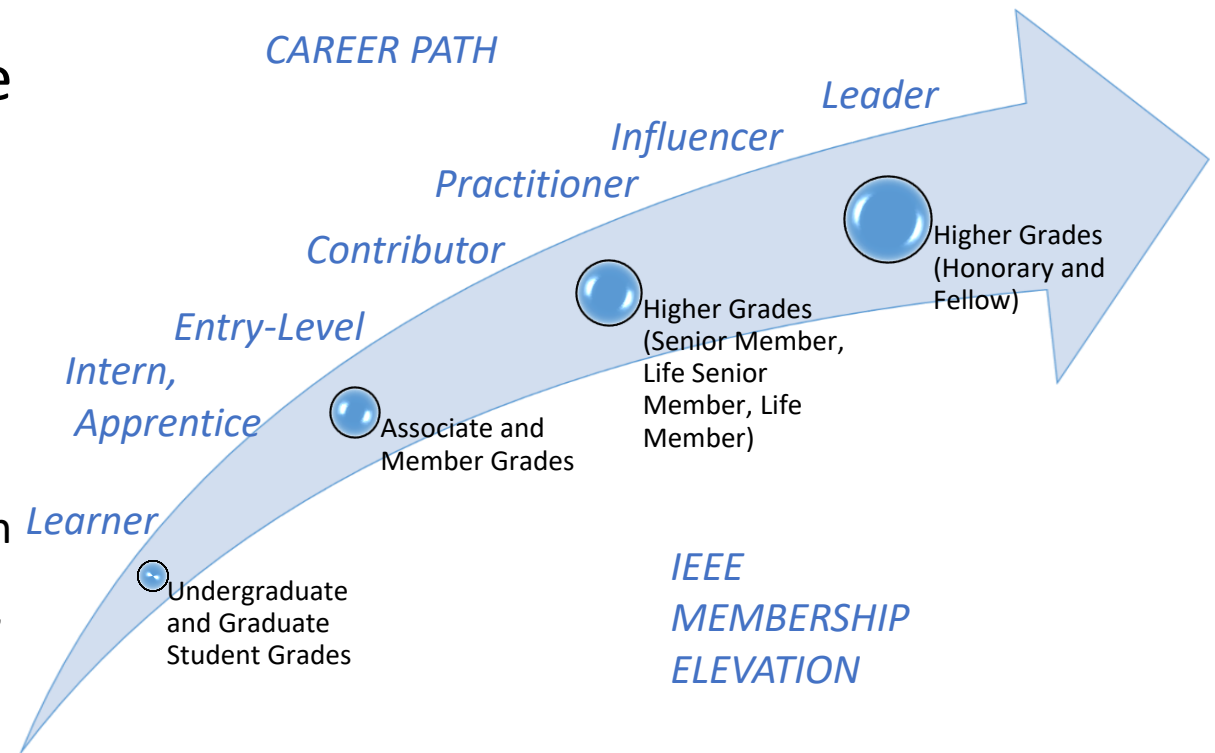
*TIP: Use [IEEE Collabratec - People](#) to identify and connect with Senior Members in any geographic area. Senior Members may serve as consultants, project leaders, science fair judges, and so forth.*



# Senior Member Elevations

## Why is Higher Grade Elevation Important?

- ▶ Elevation aligns membership grade with level of expertise and contributions to ones profession:
  - IEEE membership levels identify you as superior talent.
  - Elevated member grades can bring added peer recognition to your accomplishments.
  - Higher grade levels are indicative of greater expertise often required for key IEEE leadership roles and principle engagements in industry, public policy-making, projects, conferences, consulting, teaching, publishing, and more.

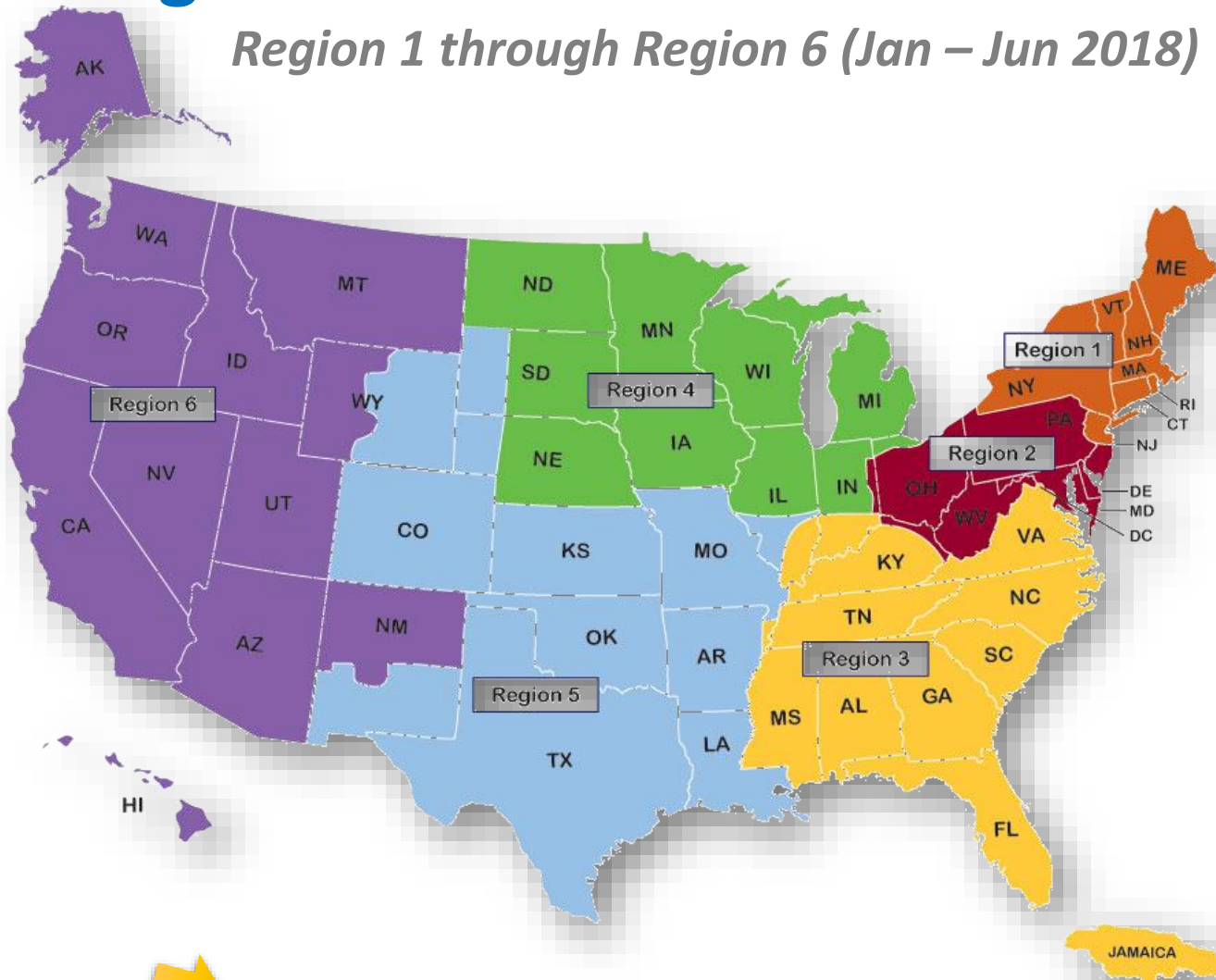


*TIP: Elevate your membership grade as you advance your career path.*



# Regional Statistics of Senior Member Elevations

Region 1 through Region 6 (Jan – Jun 2018)



Region	Membership as of 31 December 2017 (Member grade)	2018 SM Goal	YTD SM Elevations	% Goal
			<b>Jun-18</b>	
1	17,144	200	105	53%
2	15,327	150	85	57%
3	14,977	230	94	41%
4	11,652	145	58	40%
5	15,553	160	90	56%
6	31,354	375	218	58%
7	9,368	125	65	52%
8	41,532	750	477	64%
9	7,748	140	51	36%
10	54,409	825	601	73%
Total IEEE	219,064	3,100	1,843	59%



TIP: The next report of Senior Member Elevations is due the end of August.





# Regional Statistics of Potential Senior Member Elevations

Regions 1 through Region 10



Region	IEEE Collabratec – People 8/18		Submitted SM Applications/Nominations 8/3/18	
	Life Member & Member	Life Senior & Senior Member	Pending Referrals	Pending Review
R1	8280	1783	71	38
R2	7291	1619	64	19
R3	7576	1978	53	29
R4	5940	1171	77	25
R5	7680	1653	65	28
R6	14717	3008	126	34
R7	5183	1155	46	8
R8	23527	5557	323	143
R9	5005	945	56	32
R10	29039	5670	566	255



TIP: Potential Senior Members



# Senior Member Elevations and Retention

*Why is Identifying Qualified Members So Important?*

- ▶ Senior Member is the highest grade for which IEEE members can apply:
  - Senior members have an average retention rate of 98%.
  - A greater percentage of Senior members belong to IEEE Societies than do other IEEE member grades.
  - Senior Members, Sections, and Societies can nominate members for elevation, thus helping grow the percentage and prestige of Senior Members in the local community.
  - Sections and Societies who nominate at least five new Senior Members will be awarded US\$10 for each successful elevation, thus helping to fund local activities.

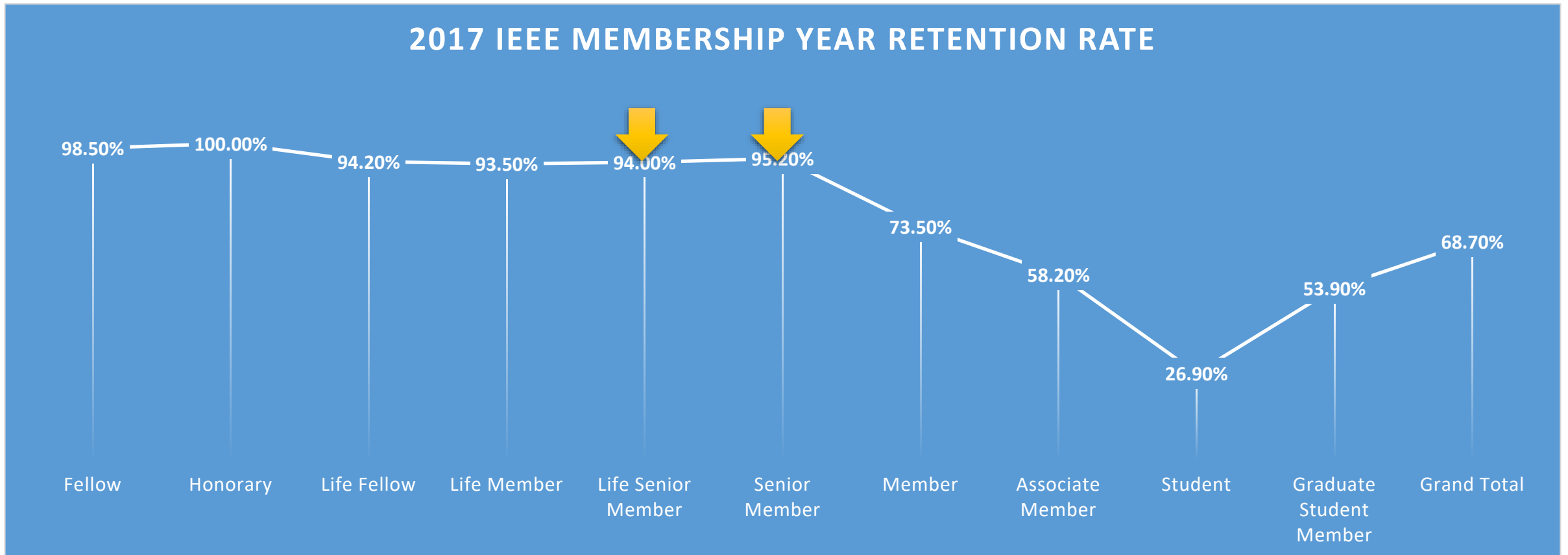


*TIP: There is no additional fee to be elevated to Senior Member grade.*



# 2017 IEEE Membership Year Retention Rate

2017 Membership Year Retention Rate for Senior Members (All Regions)



*TIP: Retention rates are significantly higher for all IEEE Higher Membership Grades.*



# Senior Member Elevations Planning (Sections/Societies)

*What are the Requirements/Qualifications?*

- ▶ Members can self-nominate or be nominated.
- ▶ Senior Members, Sections, and Societies can nominate a member.
- ▶ Candidates must:
  - Be engineers, scientists, educators, technical executives, or originators in IEEE-designated fields.
  - Have experience reflecting professional maturity.
  - Have been in professional practice for at least ten years, with some credit for certain degrees.
  - Show significant performance over a period of at least five of their years in professional practice.
- ▶ Prospective members can apply but must first join IEEE.

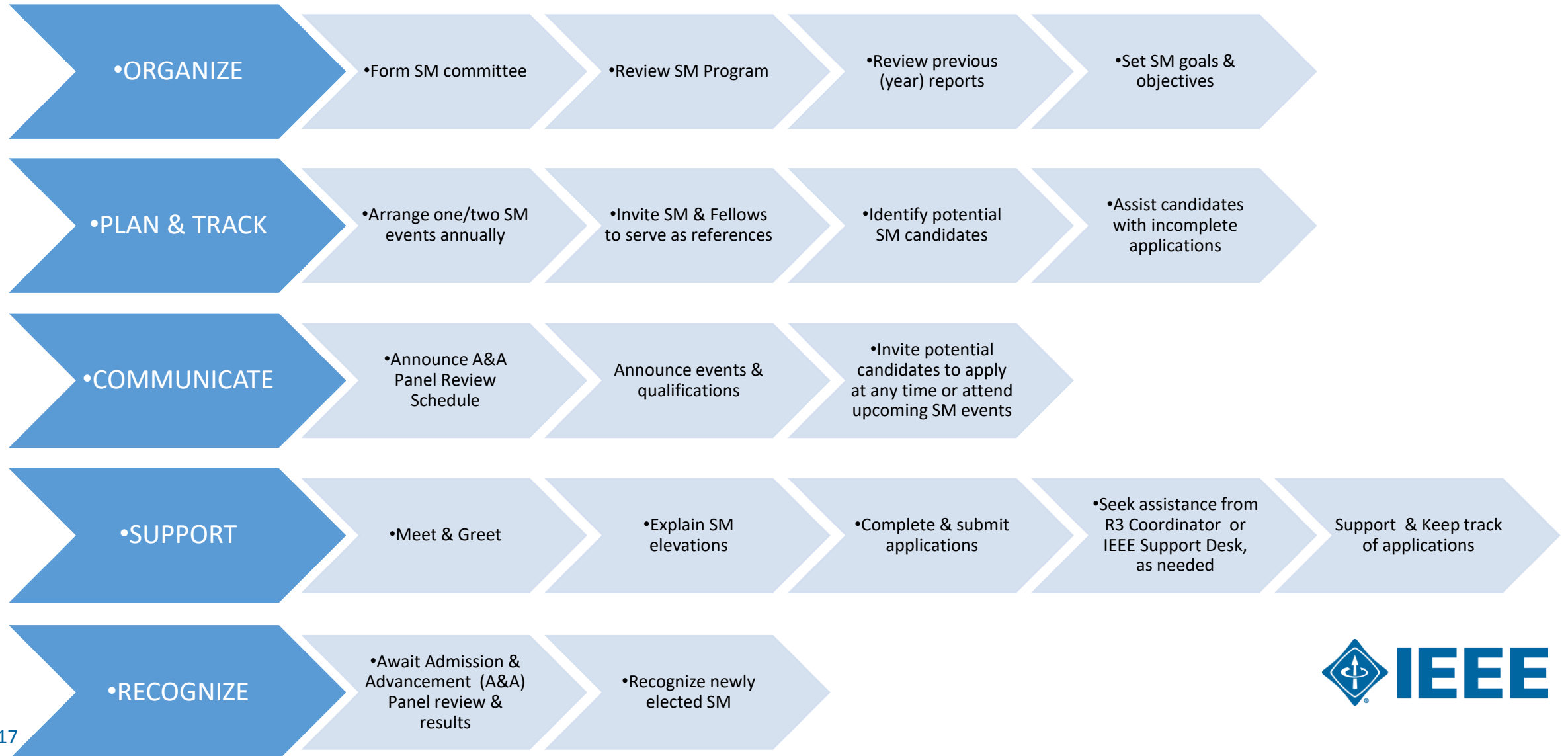


*For complete details on Senior Member requirements and qualifications, see [Senior Member Requirements/Qualifications](#)*





# Senior Member Elevations Process (Sections/Societies)



# Senior Member Elevations Process (Sections/Societies)

## *Step-by-Step Guidance for Sections and Societies Initiating Nominations*

- ▶ [Benefits to Sections and Societies](#)
- ▶ [Best Practices for Sections and Societies](#)
- ▶ [Admissions & Advancement \(A&A\) Senior Member Review Panel](#)
- ▶ [IEEE Senior Membership Nomination Event Guide](#)
  - See the **sample communications for engaging, recognizing new SMs.**
  - See the [Checklist](#) version of the Guide.
  - Learn how to identify Senior Members and Fellows for references.
  - Learn how to identify potential candidates for elevation.
- ▶ [Nominate a Senior Member](#)
- ▶ [Tracking the Nominee](#)



*TIP: A member is an “**Applicant**” if the member completed their own application for Senior Member Elevation. This is called “**Self-Nomination**.” If the member’s application is completed by a Senior Member, Section, or Society, the member is called a “**Nominee**.”*



# Senior Member Elevations Planning (Sections/Societies)

*How to Identify Senior Members and Fellows for References*

Use **OU Analytics** → **Members and Affiliates – Dashboard** to download a .csv or .xls file for identifying a list of potential volunteers.

▶ Use **vTools** → **eNotices** to invite these same volunteers to serve.

The screenshot shows the 'IEEE OU Analytics' interface. The main heading is 'Members and Affiliates - Dashboard'. Below this, there are three dropdown menus: 'Region' (set to R3), 'Grade' (set to '(Multiple values)'), and 'IEEE Status' (set to 'Active'). A yellow arrow points to the 'Grade' dropdown menu, which is open, showing a list of member grades with checkboxes. The 'Senior Member' checkbox is checked. Below the dropdown is a table with columns for 'Region', 'Council', 'Section', 'Grade', and 'Total'. The table lists various sections and their corresponding member counts for different grades. A 'Total' row is also present.

Region	Council	Section	Grade	Total
R3	Florida Council	Broward Section	Fellow	7
			Graduate Student Member	19
			Individual Member	37
			Life Fellow	63
			Life Member	3
		Canave Section	Life Senior	11
			Member	15
			SA Member	29
			Senior Member	29
		Dayton Section	Student Member	8
			Senior Member	20
			Senior Member	16
			Total	44
		Florida West Coast Section	Fellow	10
			Life Fellow	30

Membership Status	Member Grades
Active	Senior Members, Fellows, Life Seniors, Life Fellows

▶ **vTools** → <http://sites.ieee.org/vtools/>



# Senior Member Elevations Planning (Sections/Societies)

## How to Identify Potential Candidates for Elevation

Use [OU Analytics](#) → **Memberships, Subscriptions, and More – Product Dashboard** (first tab)

1. Apply the following filters:
  - **Product Type:** IEEE Memberships
  - **Grade:** Member, Life Member
2. On the **Detail Tab**, filter for years of service greater than five years.

- ▶ Email an invitation to potentially eligible candidates:
  - Use the Contact flags to avoid members who do not wish to receive emails.
- ▶ Use OU Analytics reports results to track:
  - Members who want to be elevated
  - Referrers assigned to each member



Product Dashboard | Product Summary by Region b... | Renewal Category Dashboard | Renewal Summary by Region b... | Detail

### IEEE OU Analytics

#### Memberships, Subscriptions, and More - Detail

This list provides details of the members/participants for memberships, communities, councils, online libraries, and periodicals. Memberships are preselected for you.

- Refine data through filters and view results.
- Download options are available by clicking "Download" in the upper right corner.
- Additional contact/member details are provided in the output.

**Product Type** | **Product Name** | **Region** | **Grade** | **Status** | **Gender** | **Years of Service** | **Renewal Category**

IEEE Membership | IEEE Membership | R3 | (Multiple values) | Active | (All) | (Multiple values) | (All)

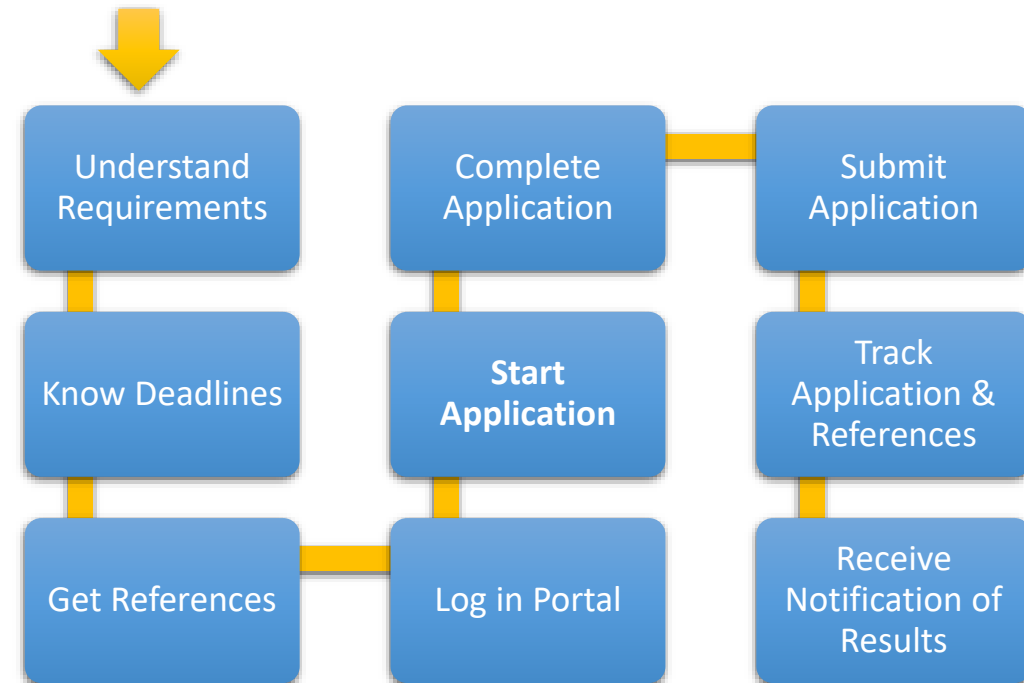




# Senior Member Elevation Planning (Members)

## Step-by-Step Guidance for Managing the Individual Application/Nominee

- ▶ [Understand the requirements/qualifications.](#)
- ▶ [Determine the application deadline](#)
- ▶ [Contact qualifying references.](#)
- ▶ **Use the [Senior Member Portal](#):**
  1. Log in the Senior Member Portal using your IEEE username and password.
  2. Click the **Apply or Nominate** button to apply.
  3. [Complete, submit the application form.](#)
  4. [Submit a resume or curriculum vitae.](#)
  5. [Track the application and references.](#)
  6. [Receive notification of results.](#)



**TIP:** In the Senior Member Portal:  
**My Applications** – review this section of the portal to keep up with applications submitted by you.  
**My Referrals** – review this section of the portal to keep up with referrals submitted by you.

# Additional Information for Senior Member Elevations

- ❑ *Encourage Senior Member Elevations by Leveraging the Data*
- ❑ *Encourage New Senior Member Elevations by Engaging Current Senior Members*
- ❑ *Encourage New Senior Member Elevations Through Programming*
- ❑ *Admission & Advancement Senior Member Elevation Panel Meetings*
- ❑ *Get Help for Senior Member Elevations Issues*

# Additional Information

*Encourage Senior Member Elevations by Leveraging the Data (August 8, 2018)*

Region	All Members	All LSM-SM	%
R1 -Northeastern USA	12729	1783	14%
R2 -Eastern USA	11015	1619	15%
R3 -Southeastern USA	12757	1978	16%
R4 -Central USA	9317	1171	13%
R5 -Southwestern USA	11746	1653	14%
R6 -Western USA	21961	3008	14%
R7 -Canada	8920	1155	13%
R8 -Europe, MEast, Africa	45219	5557	12%
R9 -Latin America	12438	945	8%
R10 -Asia and Pacific	73901	5670	8%
Total IEEE	220003	24539	11%



**16% of Region 3 Members are Life Senior & Senior Members**



**Only 5% of Region 3 Members are Volunteers**

Region	All Members	All Volunteers	%
R1	12729	705	6%
R2	11015	516	5%
R3	12757	696	5%
R4	9317	565	6%
R5	11746	616	5%
R6	21961	994	5%
R7	8920	594	7%
R8	45219	3188	7%
R9	12438	1945	16%
R10	73901	4693	6%
Total IEEE	220003	14512	7%

Region	All Volunteers	All LSM/SM Volunteers	%
R1	705	309	44%
R2	516	250	48%
R3	696	319	46%
R4	565	202	36%
R5	616	233	38%
R6	994	373	38%
R7	594	222	37%
R8	3188	968	30%
R9	1945	333	17%
R10	4693	1120	24%
Total IEEE	14512	4329	30%



**But 46% of all Region 3 Volunteers are Senior Members**

Source: IEEE Collabratec, 8 Aug 2018



# Additional Information (continued)

*Encourage New Senior Member Elevations by Engaging Current Senior Members*



- ▶ IEEE Collabratec is IEEE's social media networking system. Members login using their IEEE username and password to reach Senior Members as potential speakers, mentors, project talents, collaborators, co-presenters, and so forth. Join Collabratec and extend ones professional network!
- ▶ In the **People** view, Senior Members can promote their interests and availability for partnerships to other SMIEEE. Powerful **filters** enable people searches via membership status, interests, section, region, relationships, country, and company. Members can even **Invite Contacts** (non-IEEE members) to join Collabratec, potentially recruiting new Senior Members.
- ▶ Encourage newly elevated Senior Members to populate their **profiles** in Collabratec, then leverage Collabratec profiles in Section and Society planning as a means to identify distinguished speakers and resources for students, universities, technical sessions, and community forums.

A screenshot of the IEEE Collabratec web interface. The top navigation bar includes the IEEE Collabratec logo, a search bar, and user information for Jacquelyn. The main content area shows search results for 'Senior Member' with 21881 results found. A grid of user profile cards is displayed, including Alessio Griffoni, Weiqi Luo, Greg Cook, Eric Kerrigan, and Yu Wang. A yellow arrow points to the 'Filters' dropdown menu on the right, which lists various search criteria like Member Status, My Section, Memberships &amp; Affiliations, Region, Relationship, Country, Company, and School. An inset window shows the profile of Jacquelyn Cunningham, with a yellow arrow pointing to it from the text below. The profile shows a 100% completion rate and a bio.

*Here's Jacquelyn's profile.*

Source: IEEE Collabratec, 8 Aug 2018





# Additional Information (continued)

## Encourage New Senior Member Elevations Through Programming

- ▶ **Know and promote the meeting schedule of the Admission & Advancement Senior Member Elevation Panel.** The panel meets internationally and only 5 to 7 times per year; so, prospective members have just a few opportunities to be elevated to Senior Member. (See the following slide for the 2018 schedule. The next application deadline is September 15<sup>th</sup> !)
- ▶ **Professional Activities Committees for Engineers (PACE) Funding** - contact the Region 3 PACE Coordinator when planning Senior Member elevation events. PACE provides funding for these activities but resources are limited. Contact the [Region 3 PACE Coordinator \(2018\)](#) or the local Section Chair early in the planning year.
- ▶ **Plan one or two “Senior Member Roundups” each year.** These events can be as rigorous or light-hearted as a Section/Society desires, with the goal being increased participation. Track and keep up with participants and other potential SMIEEE; however, be sure to respect members’ privacy as established with IEEE.
- ▶ **Facilitate networking.** Establish a social or professional opportunity for relationship building among current and prospective Fellows and Senior Members.
- ▶ **Contact the IEEE Senior Member Support Group**– email concerns and recommendations to this IEEE team, especially suggestions for improving the Senior Member process. [Email senior-member@ieee.org](mailto:senior-member@ieee.org)

Senior Members, Electromagnetics Group, National Physical Laboratory (UK)



Charlotte Section



Malaysia Section



Buenaventura Section





# Additional Information (continued)

## *Admission & Advancement Senior Member Elevation Panel Meetings*

2018 Submission Deadline Dates	2018 Panel Dates	Location
<b>7 February</b>	17 February	Lake Buena Vista, FL, USA (R3)
	March	No Panel Scheduled
<b>31 March</b>	21 April	Guadalajara, Mexico (R9)
	May	No Panel Scheduled
<b>13 June</b>	23 June	New Brunswick, NJ, USA (R1)
	July	No Panel Scheduled
<b>1 August</b>	11 August	Chicago, IL, USA (R4)
	September	No Panel Scheduled
<b>15 September</b> 	6 October	Rome, Italy (R8)
<b>27 October</b>	17 November	Vancouver, British Columbia, Canada (R7)



**TIP:** November is the last 2018 panel meeting.



# Additional Information (continued)

## Get Help for Senior Member Elevations Issues

- ▶ **IEEE Support Center** – submit issues to the Support Center via email, chat, service ticket, or phone but know that Sections, Societies, and members can also contact the Region 3 Senior Member Elevations Coordinator with their questions.
- ▶ The Support Center also maintains an excellent and interactive knowledgebase for frequently asked and answered questions.

**IEEE SUPPORT CENTER**

Support Home | **Answers (FAQ)** | Submit A Question

Find Answers

Search

Most Popular Questions

- How do I change my IEEE Account information?
- How do I recover my IEEE Account?
- What can I access with my IEEE Account?
- How do I unlock my IEEE Account?
- How do I print a Member Certificate from IEEE Collabratec?
- How do I renew my annual membership?
- How can I reactivate my GoogleApps@IEEE account?
- I failed to renew my membership and it has been more than 90 days. How can I access my GoogleApps@IEEE account?
- How do I become an IEEE Member?
- Is IEEE Xplore digital library content indexed in SCOPUS?
- How do I publish a paper with the IEEE?
- What do I do if I am not receiving my Google mail?

[See all popular questions](#)

Featured Support Topics

Conferences	Geographic Units
Application/MOU Publication	Chapters Life Members

Quick Links

- Access your GoogleApps@IEEE service.
- Set up a new GoogleApps@IEEE account.
- View the FAQ and visit the Google Help Site.
- Access my IEEE Account
- Recover my IEEE Account Username and Password
- Unlock my IEEE Account
- Create an IEEE Account

Contact IEEE

- Live Chat**  
Chat with a member of our support team.
- Additional Options**  
Visit the IEEE Contact & Support page for more contact options.
- Feedback**  
How can we make this site more useful for you?

# Senior Member 2020

*Looking Outward and Forward...*



# Senior Member 2020

## Looking Outward and Forward to Year 2020

- ▶ A few challenges for the Senior Member Program were introduced in this training. Here are four for consideration:
  - **Elevation is based upon past achievements.** Membership elevation could be re-defined to also look forward, to the future implied by “advancing technology for humanity.”
  - **The influence of elevation is uneven.** There is a need to create greater industry-recognized value and adoption of elevation --or create something new. Elevation appears internal to IEEE.
  - **There is a misconception that “Senior” refers to personal maturity** rather than professional maturity, as IEEE elevations are also tied to years of service.
  - **Information is published in too many locations.** While there is plenty information and support for Senior Member Elevation, there are far too many links, pages, contacts, and reports leading to a fragmented view of the importance of Senior Members.



### Why 2020?

- Year 2020 is a leap year and 2020 is an adage for having gained clarity in mission. For these reasons, IEEE has two perfect tags for realigning, marketing and rebranding for greater stakeholder satisfaction.
- The period 2018-2020 creates an opportunity to develop a pivotal recommendation to impact the claim “the percentage and number of IEEE Senior members reflect the competence and prestige of IEEE and its products and services.”
- Sections Congress 2020 will be time to vote on this recommendation and constitutional changes.

# Senior Member 2020

## Related Presentation

- ▶ The topic “Senior Member 2020” was first presented at the Region 3 SoutheastCon 2018 with the below description. Explore the presentation at the link below.
  - *“Making the case for Senior Member 2020 - An analysis of the Senior Member Grade and what the results tell us for new member applications.” (Cunningham)*



---

J. D. N. Cunningham. “Senior member 2020,” presented at the IEEE Region 3 SoutheastCon 2018, Tampa Bay Area, Florida, April 21, 2018. Available: <http://ewh.ieee.org/reg/3/excom/meetings/2018%20SoutheastCon%20Presentations/Saturday/17%20-%20Senior%20Member%202020-Final.pdf> [April 22, 2018].



# Open Discussion

## Senior Member Elevations Q&A

- ▶ Email specific Region 3 questions to the Region 3 Senior Member Coordinator:
  - Jacquelyn D. N. Cunningham, SMIEEE
  - [jdnc@ieee.org](mailto:jdnc@ieee.org)
- ▶ Popular questions regarding IEEE Senior Member Elevations can be found in the **IEEE Support Center** portal.
  - Go to <https://supportcenter.ieee.org/>.
  - Use the **Search** box to find **Senior Member**.



**TIP:** The Support Center responds within 2 business days. Be sure to plan elevation activities with sufficient time to address any issues.



# Appendix

## *Region 3 Section Support Committee Overview*



# R3 Section Support Committee (SSC) Overview

## *Vision & Mission*

- ▶ Region 3 Vision: Engage every Member through Communities of Interest.
- ▶ Fundamental Position:
  - The Member IS IEEE.
  - The Section OWNS the Member RELATIONSHIP and IS IEEE to the Member.
  - The Region is the ENABLER of full member ENGAGEMENT.
- ▶ Section Support Committee Mission is Assist the Sections:
  - To stimulate the interest of IEEE members.
  - To motivate members to volunteer.
  - To encourage professional and technical growth of all members.
  - To share best practices with other Sections.
  - To form Engineering Affinity Groups.
- ▶ For full details, visit the [R3 Southeastcon Repository](#) and access Presentation #19

Reference: [IEEE MGA Vision, Mission, Guiding Principles, Goals, and Strategies](#)



# Region 3 Section Support Committee Members



Mark Torres  
Committee Chair



Bill Ratcliff  
Committee Mentor



Daniel Diaz  
Young Professionals



Allison Mercer  
Women in Engineering



Tom Bellarmine  
Life Member



Grayson Randall  
Projects



Jacquelyn Cunningham  
Senior Member  
Elevations



Charles Lord  
Operations Specialist



Bill Marshall  
Operations Specialist



Glenn Parker  
Technical Activities



# Region 3 Section Support Committee

## *Committee Member Contact Information*

Committee Position	Name	Email Address
Section Support Committee Chair	Mark Torres	<a href="mailto:mgtorres@ieee.org">mgtorres@ieee.org</a>
Life Member Coordinator	Tom Bellarmine	<a href="mailto:gnanasigamani.bellar@famu.edu">gnanasigamani.bellar@famu.edu</a>
Young Professional Coordinator	Danial Diaz	<a href="mailto:d.diaz@ieee.org">d.diaz@ieee.org</a>
Women in Engineering Coordinator	Allison Mercer	<a href="mailto:Allison.Mercer@gtri.gatech.edu">Allison.Mercer@gtri.gatech.edu</a>
Senior Member Elevation Coordinator	Jacquelyn Cunningham	<a href="mailto:jdnc@ieee.org">jdnc@ieee.org</a>
Sections Operations Specialists (Position 1)	Charles Lord	<a href="mailto:c.j.lord@ieee.org">c.j.lord@ieee.org</a>
Sections Operations Specialists (Position 2)	Bill Marshall	<a href="mailto:bill.marshall@gtri.gatech.edu">bill.marshall@gtri.gatech.edu</a>
Project Coordinator	Grayson Randall	<a href="mailto:g.randall@ieee.org">g.randall@ieee.org</a>
Technical Activities Coordinator	Glenn Parker	<a href="mailto:Glenn.Parker@gtri.gatech.edu">Glenn.Parker@gtri.gatech.edu</a>
Section Support Committee Mentor	William (Bill) Ratcliff	<a href="mailto:w.ratcliff@ieee.org">w.ratcliff@ieee.org</a>

The [IEEE Support Center](#) is a great online resource.



# Region 3 Section Support Committee

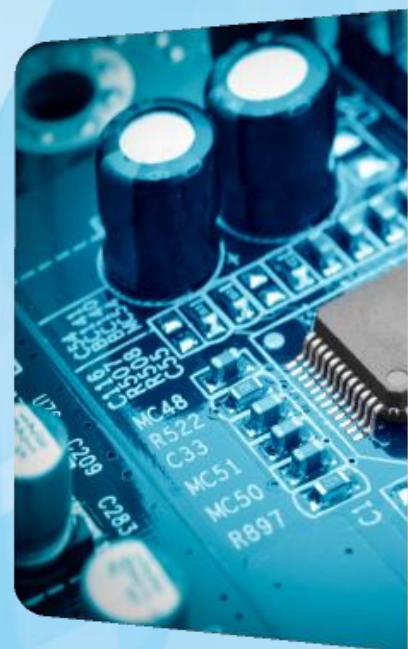
## *Support Team Contact Information*

Support Team	Name	Email Address
Member Activity Committee Chair	Sonya Dillard	<a href="mailto:sonya.dillard@ieee.org">sonya.dillard@ieee.org</a>
Student Activities Coordinator	Victor Basantes	<a href="mailto:victor.basantes@ieee.org">victor.basantes@ieee.org</a>
Region 3 Director	Gregg Vaughn	<a href="mailto:g.vaughn@ieee.org">g.vaughn@ieee.org</a>
Region 3 Director Elect	Jill Gostin	<a href="mailto:Jill.Gostin@gtri.gatech.edu">Jill.Gostin@gtri.gatech.edu</a>
Region 3 Past Director	Jim Conrad	<a href="mailto:jmconrad@uncc.edu">jmconrad@uncc.edu</a>
Region 3 PACE Chair	Theresa Brunasso	<a href="mailto:theresa.brunasso@gmail.com">theresa.brunasso@gmail.com</a>
IEEE HQ Region 3 Staff Contact	Chris Wright	<a href="mailto:wright.c@ieee.org">wright.c@ieee.org</a>
IEEE HQ Region 3 Staff Contact	Adrienne Hahn	<a href="mailto:a.hahn@ieee.org">a.hahn@ieee.org</a>
IEEE HQ Young Professional Staff Coordinator	Kristen Mahan (YP)	<a href="mailto:k.mahan@ieee.org">k.mahan@ieee.org</a>
IEEE HQ Women in Engineering Staff Coordinator	Paola Bringas (WIE)	<a href="mailto:p.bringas@ieee.org">p.bringas@ieee.org</a>

The [IEEE Support Center](#) is a great online resource.







# Thank you!

*Mark Torres*  
*R3 SSC Chair*  
[mgtorres@ieee.org](mailto:mgtorres@ieee.org)

*Chris Wright*  
*IEEE staff*  
[wright.c@ieee.org](mailto:wright.c@ieee.org)

*Jacquelyn Cunningham - Presenter*  
*R3 Sr. Member Elevations Chair*  
[jdnc@ieee.org](mailto:jdnc@ieee.org)

